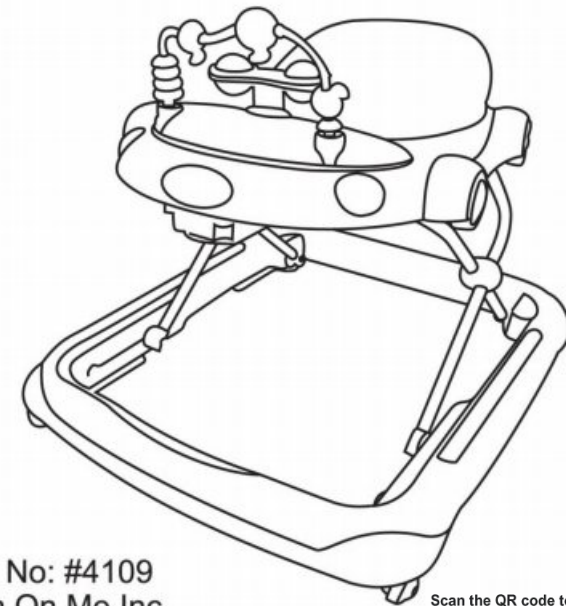


BABY WALKER

Read all instructions before assembly and use of the walker.
Keep instructions for future use



Assembly instructions



Model No: #4109
Dream On Me Inc.

Scan the QR code to register your product
<https://dreamonme.com/customercare/registration/>



1532 S Washington Ave Piscataway TWP NJ
08854

Email: info@dreamonme.com

www.dreamonme.com

DRAWINGS IN THIS MANUAL ARE FOR ILLUSTRATION PURPOSES ONLY, ACTUAL PRODUCT MAY VARY. MANUFACTURER RESERVES THE RIGHT TO CHANGE ANY SPECIFICATION OR FEATURES WITHOUT PRIOR NOTICE.

A

WARNING

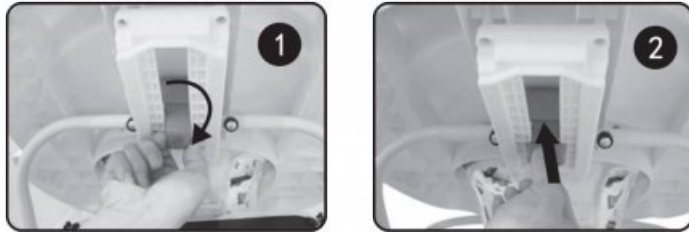
- 1.) Never leave the child unattended ;
- 2.) Prevent access to stairs, steps and uneven surface ;
- 3.) Read the instructions carefully before use and keep them for future reference.
The child may be hurt if you do not follow these instructions ;
- 4.) The child will be able to reach further and move faster than before when in the baby walking frame ;
- 5.) Guard all fires, heating and cooking appliances ;
- 6.) Remove hot liquids, electrical flexes and other potential hazards from reach ;
- 7.) Prevent collision with glass in doors, windows and furniture ;
- 8.) Do not use the baby walking frame if any components are broken or missing ;
- 9.) This baby walking frame should be used only for short periods of time(e.g.20 min);
- 10.)This baby walking frame is intended to be used by children who can sit unaided , approximately from 6 months. It is not intended for children weighing about 26 pounds or 12 kgs;
- 11.)Do not use replacement parts other than those approved by the manufacturer or distributor;
- 12.)Should you have any questions about your baby walker or experience any difficulties , please contact the retailer from which you purchased the product. Your local retailer is in the best position to promptly address any requirements.
- 13.)Executive standard: ASTM F977,16 CFR 1216.
- 14.)Never leave child unattended.Always keep child in view while in walker.
- 15.)Use only on flat surfaces free of objects that could cause the walker to tip over.
- 16.)To avoid burns, keep the child away from hot liquids,ranges, radiators, space heaters, fireplaces,etc.
- 17.)Each walker shall be labeled with a separate stairs warning visible to the consumer when placing the child in the walker.
- 18.)The product shall be assembled by an adult

Care and Maintenance:

- 1.) Never force mechanisms or moving parts. If you are not sure what to do refer to the instructions.
- 2.) Clean plastic and metal parts with a damp cloth or a light detergent.
Do not use solvents, ammonia or petrol.
- 3.) Regularly check unit to ensure no parts are loose or broken.
- 4.) Clean the rubber pad regularly to maintain stopping performance.

| | |
|------------------------------|---|
| <h1>A</h1> WARNING | STAIR HAZARD Avoid serious injury or death. Block stairs/steps securely before using walker. |
| | Parking brake use does not totally prevent walker movement. Always keep child in view when in the walker, even when using the parking brakes. |

4. FUNCTION:



1. HEIGHT ADJUSTOR

To adjust walker to desired position (there are 3 positions available) put one hand on the top of walker, and turn the red button on the height adjustment mechanism beneath the top table by 90 degrees with other hand. Then push up the button to adjust height position. When you release the red button, it will return to original position. The mechanism is locked automatically (See Fig1&2).



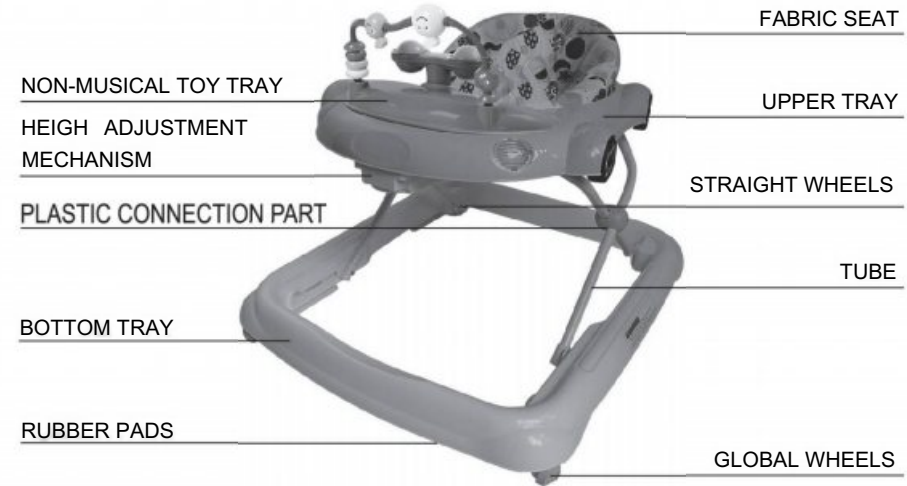
2. GLOBAL FRONT WHEELS: Front wheels can rotate(See Fig3).

3.SAFETY RUBBER PADS: Safety rubber pads for avoiding children falling down the stairs or tipping over in walker(See Fig4).

4.STRAIGHT WHEELS: The straight wheels will automatically brake when baby walker is moving backwards too fast(See Fig5).

EE!

1. PARTS IDENTIFICATION



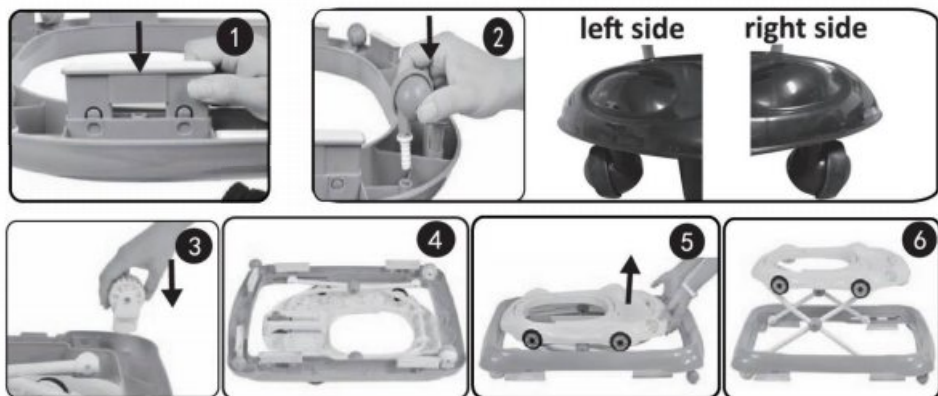
2. CARTON CONTENTS:

Please check if all those parts are included when you open the carton. If there are any missing parts please contact your local retailer

| | | | |
|-----------------------|-------------------|-------------------|-----------------------|
| | | | |
| WALKER FRAME X1 PC | FABRIC SEAT X1 PC | TOY TRAY X1 PC | PLASTIC BACKREST X1PC |
| | | | 0¹ |
| STRAIGHT WHEELS X2PCS | TOYX1PC | RUBBER PADS X6PCS | GLOBAL WHEELS X2PCS |

E3

3. ASSEMBLY INSTRUCTION



1) ASSEMBLY OF THE PARTS UNDER THE BOTTOM RIM:

See Fig 1: Insert those 6 rubber pads into their positions.

See Fig 2: Insert 2 global wheels into the holes under front bottom, as the left and right wheels are different, make sure that the left and right wheels are properly installed as per above Fig 1, DO NOT install the left and the right wheel upside down.

See Fig 3: Insert 2 straight wheels into the holes under rear bottom. Please make sure that all parts are fixed well as picture shown on Fig 4.

2) FRAME ASSEMBLY:

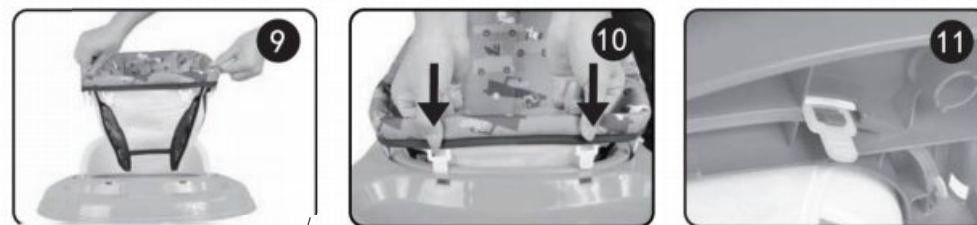
As picture shown on Fig 5 & Fig 6, please follow the direction of the arrow. Completely open frame when you hear the sound "click".



3) Backrest assembly:

See Fig 7: Insert 2 pins on the both side of backrest as the arrow shown. See Fig 8, press down the backrest as the arrow shown.

E0



Assembly of the fabric seat:

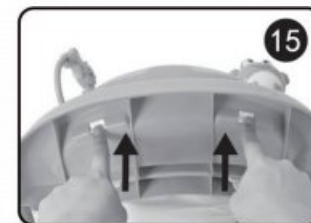
First, insert the pins in the front of seat into the holes on the upper tray referring to Fig 9. Then pull out the buckles at the back of seat through the holes on the upper tray according to Fig 10. The fabric seat is fixed completely as shown on Fig 11.



TOY TRAY ASSEMBLY & DISASSEMBLY:

See Fig 12, Following the direction of the arrow, insert the toy into hole of the tray, the assembly is finished.

See Fig 13/14, Putting the toy tray on the upper tray and pushing down, when hearing a "click", the assembly is finished, See Fig 15. Following the direction of arrow and pressing the button of the musical toy tray under the upper tray, the disassembly is completed.



BE!



1532, S. Washington Avenue
Piscataway, NJ 08854
E-mail: info@dreamonme.com

www.dreamonme.com

Follow us on



[@dreamonmeinc](https://www.facebook.com/dreamonmeinc)



[@dreamonmeinc](https://www.instagram.com/dreamonmeinc)

to get your nursery featured on our social media.

Enter our monthly giveaway!

Simply scan the QRcode to register.



Chat with us!

For any questions or concerns or feedback.



DOM
FAMILY

