

User Guide

These instructions
are important! Please
read carefully and
retain for future use.

NOTE:

Drawings in this manual are for
illustration purposes only.

The actual product may vary.

Manufacturer reserves the right
to change any specifications or
features without prior notice.

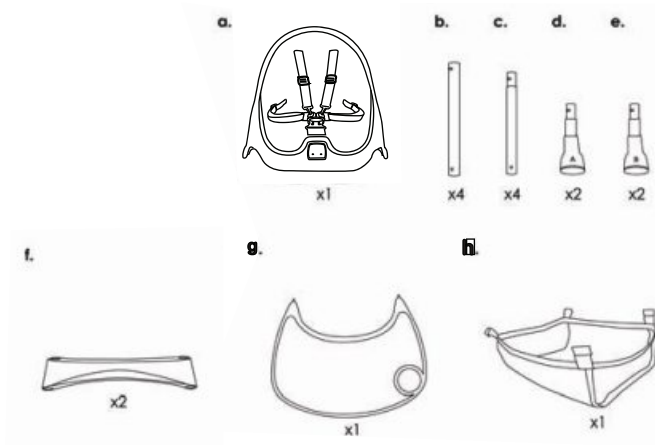
Scan the QR code to register your product
<https://dreamonme.com/customercare/registration/>



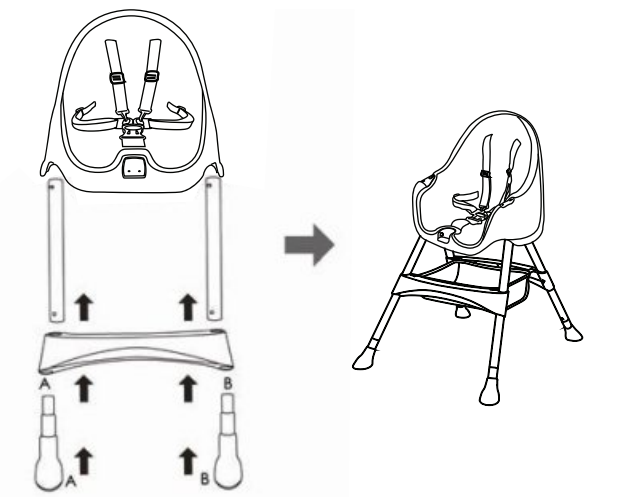
High Chair

Item: #259

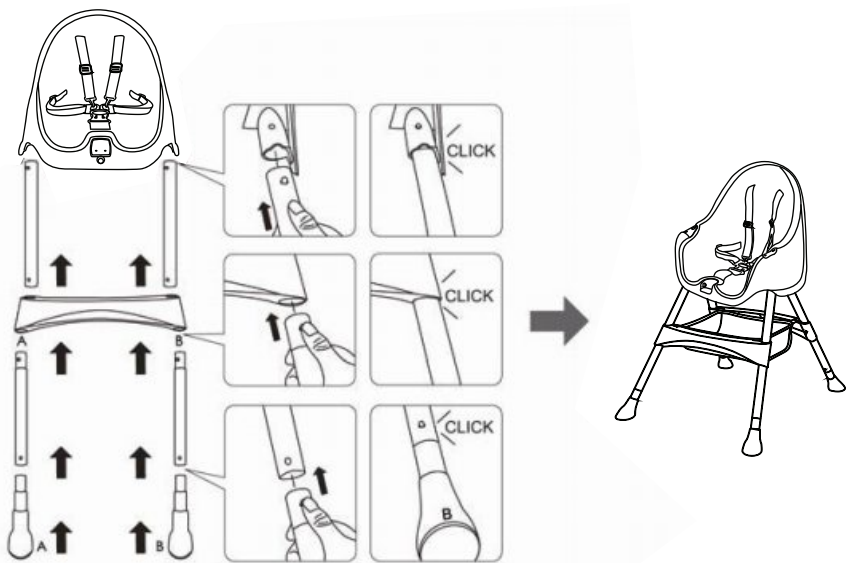
High Chair Components



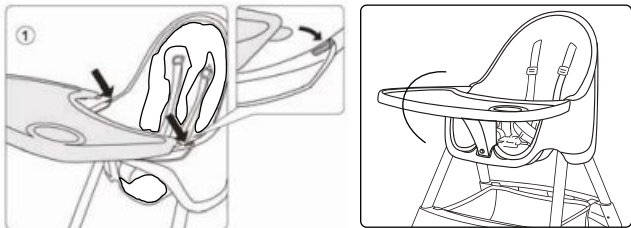
Adjusting the Height



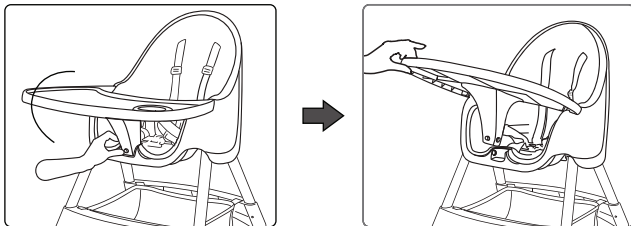
High Chair Assembly



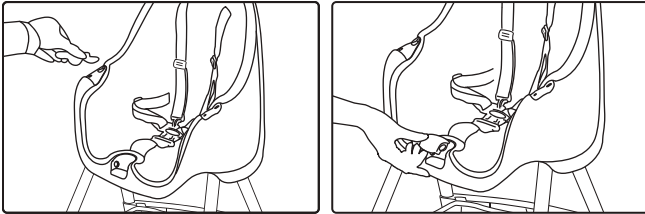
Front Tray Assembly



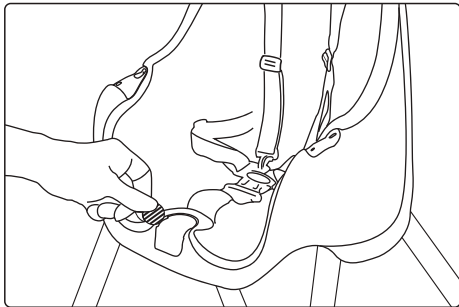
Front Tray Removal



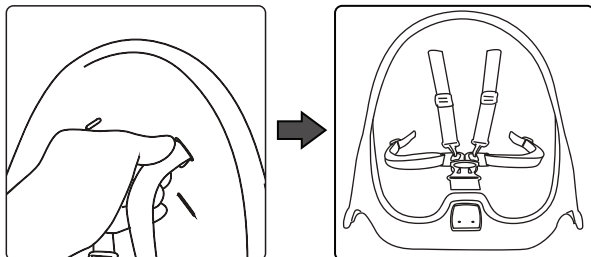
Protective Cap Assembly



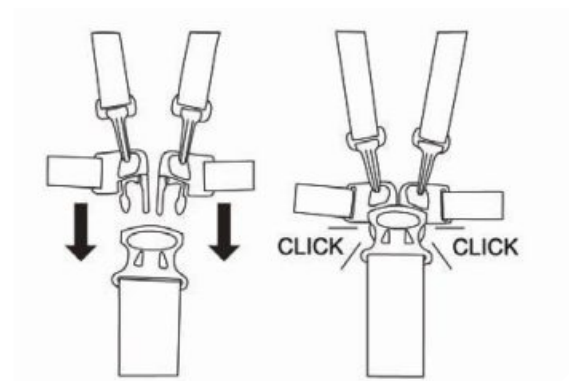
Protective Cap Removal



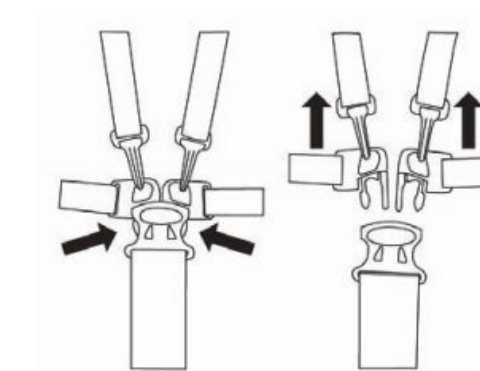
Safety Harness Assembly



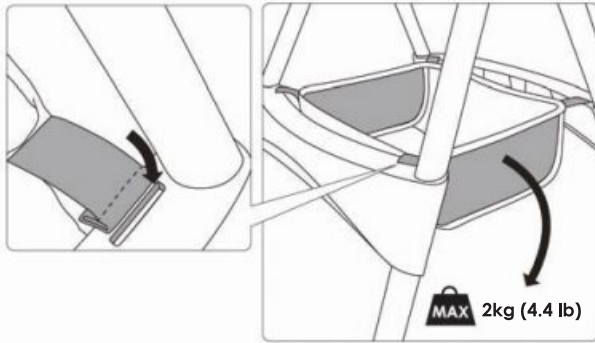
Fastening the Safety Harness



Releasing the Safety Harness



Storage Basket Assembly



Maintenance

For cleaning the fabric, seat belt, and tray, hand wash using a brush. Wipe out any excess water with a dry cloth and leave to dry in a shaded area. Ensure that all detergents are wiped out. To remove stubborn dirt, dilute a mild detergent, then apply directly to the dirty area. Thereafter, wipe off the detergent.

Ensure that any traces of moisture are wiped off with a dry cloth.

To prevent colour fading, do not leave to soak for a long period of time.

Constantly check that all parts of the high chair are fastened correctly.

Excessive exposure to sunlight could cause the colour of the high chair fabric and plastic to fade.

Failure to follow these warnings and the assembly instructions could result in serious injury or death.

! WARNING: Prevent serious injury or death from falls or sliding out, ensure

the harness is correctly fitted and that the child is secure in the restraint.

High chair is suitable for children 6 months to 36 months. High chair is not suitable for children under 6 months.

Do not use if any part is broken, torn or missing.

Do not use the high chair until the child can sit up unaided.

Do not use the high chair unless all components are correctly fitted and adjusted.

Never leave your child unattended, even for the shortest time.

Avoid placing the chair near naked heat sources such as electric bar fires, gas fires, etc. Or where a child could gain access to any other kind of hazard.

Ensure all users are familiar with the product's operation. It should always assemble and operate easily. If it does not, do not force the mechanism-stop and read the instructions.

Only use on a flat stable surface.

Ensure your high chair is fully erected before placing your child inside.

Do not move the high chair with your child inside.

Do not allow your child to climb unassisted into, play with or hang onto your high chair.

This is not a toy.

All additional hazards such as electrical flex should be kept out of reach of the child in the high chair.

Assemble the chair once only, it is not intended to be taken apart and reassembled.

Ensure that the harness is fixed correctly before use.

Always secure child in the restraint.

The child should be secured in the high chair at all times by the restraining system.

The tray is not designed to hold the child in the chair. It is recommended that the high chair be used in the upright position only by children capable of sitting upright unassisted.



1532, S. Washington Avenue
Piscataway, NJ 08854
E-mail: info@dreamonme.com

www.dreamonme.com

Follow us on



@dreamonmeinc



@dreamonmeinc

to get your nursery featured on our social media.

Enter our monthly giveaway!

Simply scan the QRcode to register.



Chat with us!

For any questions or concerns or feedback.

