

Muti-Function High Chair #267



Function:Booster
suitable for 6-24 months



Function:Junior Chair
suitable for 24-60 months



Function:High Chair
suitable for 6-36 months

IMPORTANT: READ CAREFULLY AND RETAIN FOR FUTURE REFERENCE

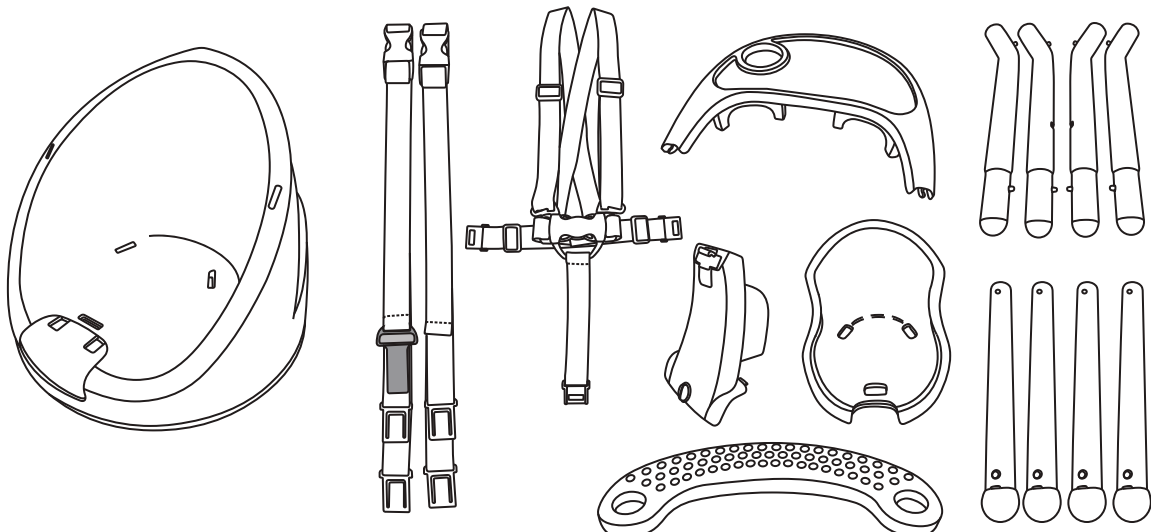
- Do not discard any packaging until you have all the components and fittings.
- Read the instructions before constructing the product then follow them step by step.
- You may find the construction of your product easier with the help of another person.

WARNING:DO NOT use the product without seat pad!

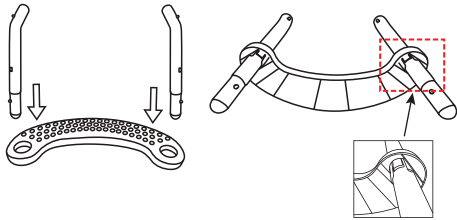
Scan the QR code to register your product
<https://dreamonme.com/customercare/registration/>



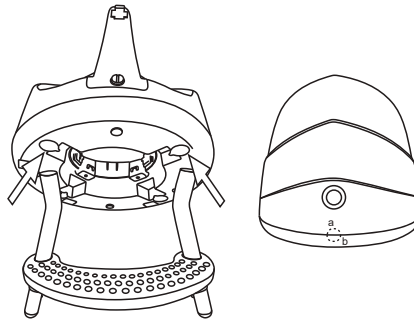
Parts



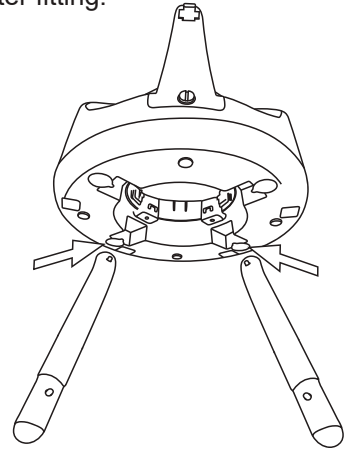
1. Slot the two upper front legs into the foot rest.
Ensure that the foot rest plastic is stuck into the hole on the legs.



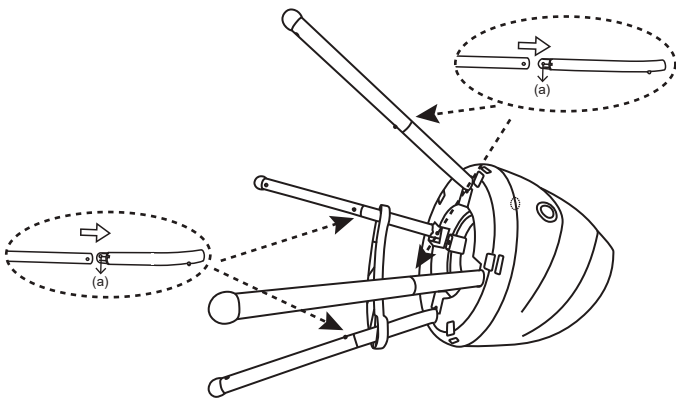
2. Make sure the make (a) is aligned to mark (b).
Slot the two front legs into the front housing on the seat. push the pins on the legs inwards and fully insert into the housing.
Ensure the pins are protruding through the holes in the housing after fitting.



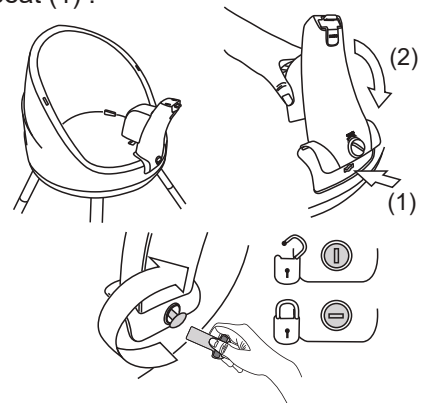
3. Slot the two rear legs into the rear housing on the seat. push the pins on the legs inwards and fully insert into the housing.
Ensure the pins are protruding through the holes in the housing after fitting.



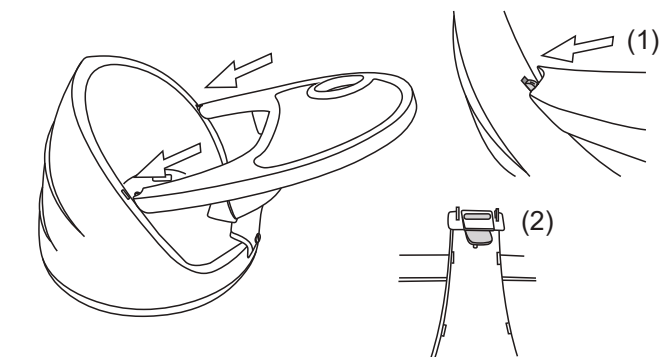
4. Attach another four legs to the upper legs. Push the pins (a) on the upper legs inwards and attach another leg to make the pins protrude through the holes in the leg after fitting.



5. Attach the tray support to the front of the seat. Slot the tabs on the back of the support into slots in the seat (1).

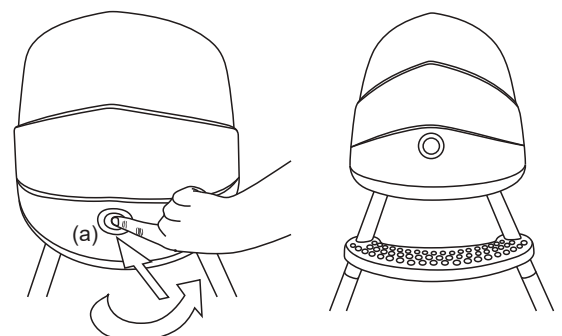


Rotate the support down until the front locks onto the seat (2).
Use the key to closed/open the support bar lock, the key is included on the product as pic.

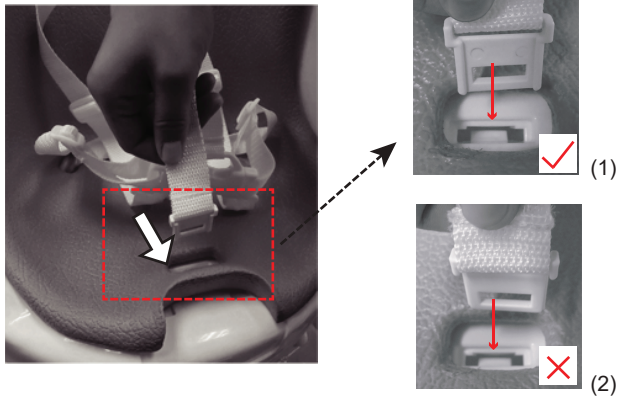


6. Slot the hooks on the ends of the tray into the slots in the sides of the seat (1). Push the tray down until it locks onto the tray support (2).

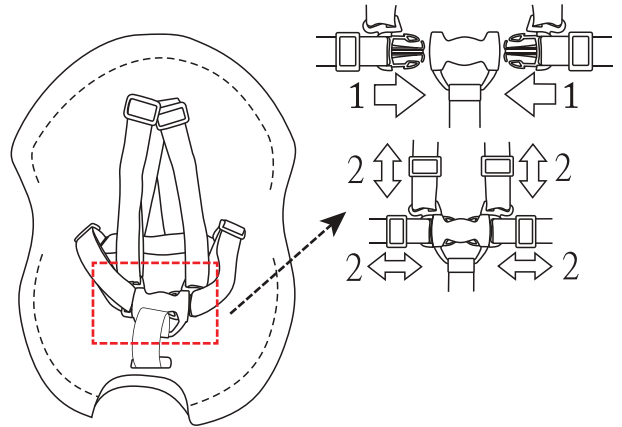
7. The seat can rotate to four position.
Push the button (a) in and turn the seat to different position as the picture shown.



8. Place the seat pad in the seat. Slot the buckles on the ends of the harness straps through the slots in the seat pad and slot the buckles through the slots in the seat. Ensure the buckle is fixed well as the right picture (1) shown and can not pull out.



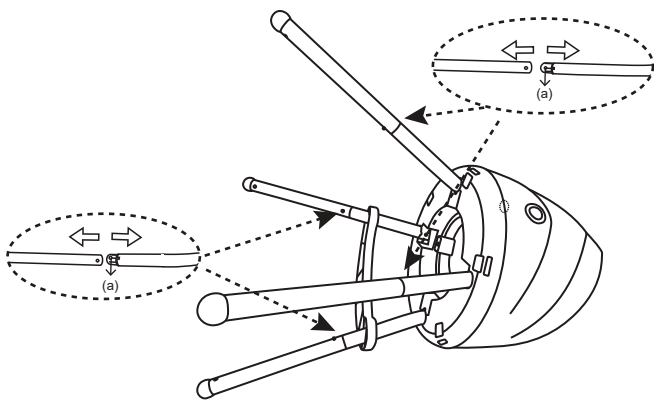
9. Slot the tabs on the waist straps into the buckle (1). To adjust the harness. Slide the straps through the adjusters to the required lengths (2).



Position high chair
Available for children
6-36 months

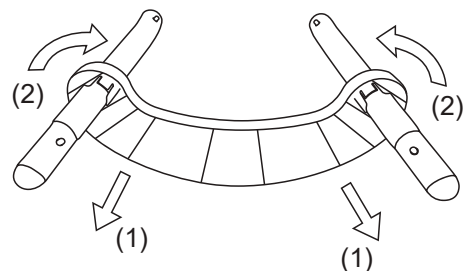


Position junior chair
Available for children
24-60 months

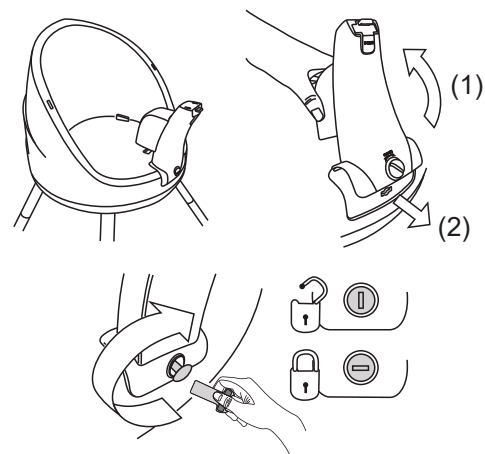
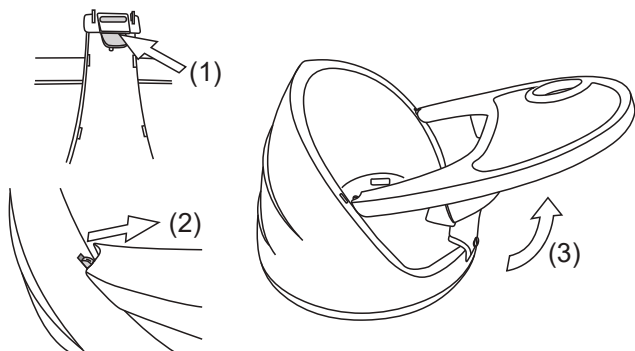


10. Push the pins (a) on the upper legs inwards and pull the second height legs out.

11. Detach the foot rest. Turn the tubes (2) and pull the foot rest downwards to detach it (1).

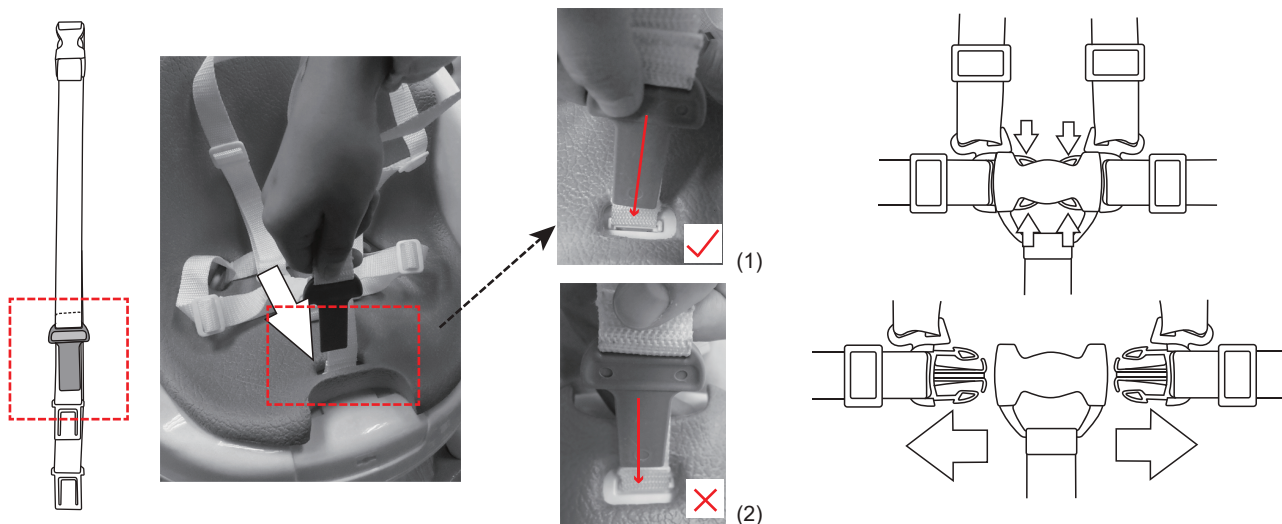


12. Press the catch on the top of the tray support inwards (1) and lift the tray upwards off the high chair (2) & (3).



13. Rotate the support up (1) to pick off the tray support from the seat (2). Use the key to unlock the support bar.

14. Take out the safety harness. Slot the key on the harness into the slots in the seat as the right picture (1) shown to take out harness.

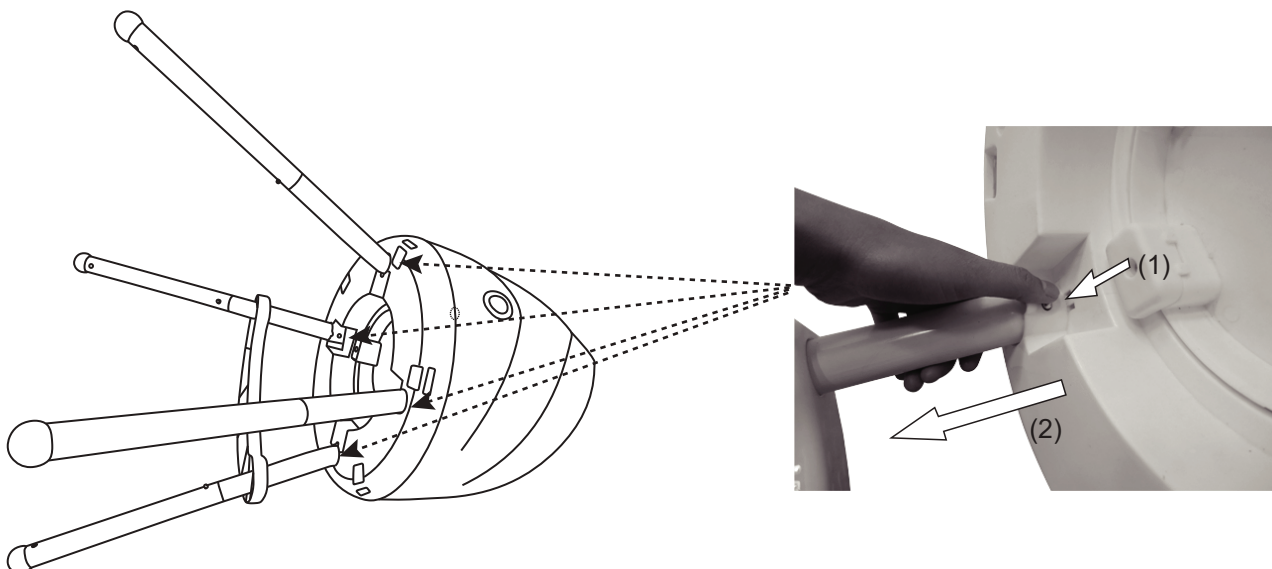


Position high chair
Available for children
14-36 months

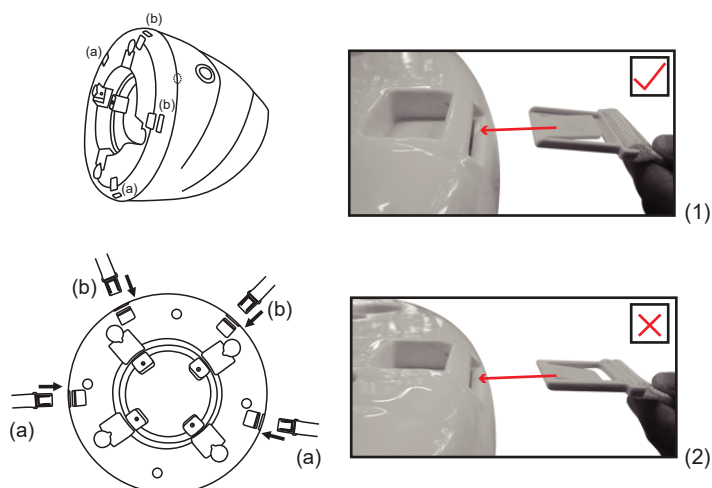


Position booster
Available for children
6-14 months

15. Push the pins (1) inwards to pull the four legs (2).

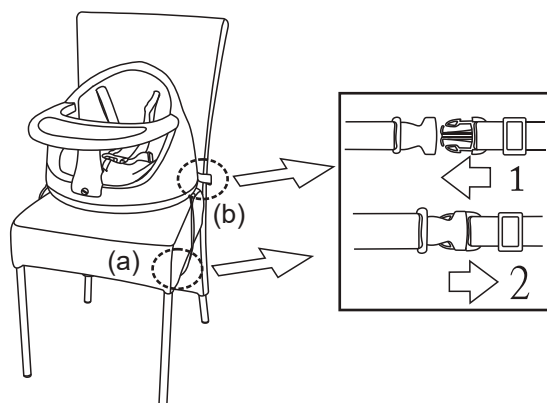


16. Slot the buckle at the end of two harness (a) & (b) into the housing under the seat as the right picture (1) shown. Ensure the harness is fixed well.



17. Fasten the booster to an adult chair. place the booster on the chair taking care that chair surface is wider than the booster base. Slide the safety belt (a) under the chair and fasten the lock-in buckle.

Slide the safety belt (b) behind the chair and fasten the lock-in buckle. Pull the belt to tension it correctly.



ATTENTION: Before any use, make sure that the booster fits the chair in a safe position.

Care & Maintenance

1. The high chair can be cleaned by sponging with warm water and a mild detergent. A mild disinfectant may be used.
2. Stubborn marks may be removed with a non-abrasive cream cleaner. Never clean with abrasive, ammonia based, bleach based or spirit type cleaners.
- 3 Do not use if any part is broken, torn or missing
- 4 Keep the chair in a dry place
- 5 All the moving parts should be kept clean. Lubricate them with silicon spray if necessary
- 6 Keep the metallic parts clean
- 7 Hand wash or clean the covering with a damp cloth and always use a neutral detergent if necessary.
- 8 Dry the covering before use. Do not dip it into water.
- 9 Protect the product against atmospheric factors, rain or snow.
- 10 Prolonged and continuous sun exposure can change the colour of the materials.

BEFORE YOU USE THE PRODUCT AS THE HIGH CHAIR POSITION, PLEASE CAREFULLY READ BELOW WARNING STATEMENT. FAILURE TO FOLLOW THESE WARNINGS COULD RESULT IN SERIOUS INJURY OR DEATH.

⚠ WARNING

1. **⚠ WARNING** Prevent serious injury or death from falls or sliding out, ensure the harness is correctly fitted and that the child is secure in the restraint.
2. the high chair is suitable for children 6 months to 36 months while using it as high chair position. High chair is not suitable for children under 6 months.
3. Do not use if any part is broken, torn or missing.
4. Do not use the high chair until the child can sit up unaided.
5. Do not use the high chair unless all components are correctly fitted and adjusted.
6. Do not leave your child unattended, even for the shortest time.
7. Avoid placing the chair near naked heat sources such as electric bar fires, gas fires, etc. Or where a child could gain access to any other kind of hazard.
8. Ensure all users are familiar with the product's operation. It should always assemble and operate easily. If it does not, do not force the mechanism-stop and read the instructions.
9. Only use on a flat stable surface.
10. Ensure your high chair is fully erected before placing your child inside.
11. Do not move the high chair with your child inside.
12. Do not allow your child to climb unassisted into, play with or hang onto your high chair.
13. This is not a toy.
14. All additional hazards such as electrical flex should be kept out of reach of the child in the high chair.
15. Assemble the chair once only, it is not intended to be taken apart and reassembled.
16. Ensure that the harness is fixed correctly before use.
17. Always secure child in the restraint.
18. The child should be secured in the high chair at all times by the restraining system, The tray is not designed to hold the child in the chair. It is recommended that the high chair be used in the upright position only by children capable of sitting upright unassisted.

BEFORE YOU USE THE PRODUCT AS THE BOOSTER CHAIR POSITION, PLEASE CAREFULLY READ BELOW WARNING STATEMENT. FAILURE TO FOLLOW THESE WARNINGS COULD RESULT IN SERIOUS INJURY OR DEATH.

⚠ WARNING

1. Prevent serious injury or death from sliding out, falls or tipping over. Do not use in motor vehicles. Always secure child in the restraint until child is able to get in and out of the booster seat without help (about 2 1/2 years old)
2. Never leave child unattended.
3. Never allow a child to push away from table.
4. Make sure that safety seat belts are properly mounted and verify before use that they are locked. Always use the crotch strap.
5. Do not fix the product on wheelchairs, stools, folding or wobbling chairs. Until child is able to get in and out of the booster seat without help (2 1/2 years old), the child should be secured in the booster seat at all times by the restraining system. The tray is not designed to hold the child in the chair.
6. It is recommended that the booster seat/high chair be used in the upright position only by children capable of sitting upright unassisted.
7. Make sure that the booster chair will not tip over.
8. Do not fix the booster chair on wheelchairs, stools, folding or wobbling chairs.
9. Do not place the booster chair near stairs.
10. Do not leave the booster chair near heat or gas sources and electrical appliances. This can cause contact burns or fires with serious consequences for your baby's safety.
11. Do not leave the booster chair near objects against which the baby can bump into with his hands or feet.
12. Do not put the booster chair on raised surfaces, tables or work tops.
13. Do not move the booster chair while the baby is sitting in it.
14. Do not use the booster chair as a car seat on any means of transport. The booster chair is not a car seat.
15. Make sure that the baby is not near the booster chair during folding and unfolding operations.
16. Use the product only as it has been manufactured. The manufacturer can not be held responsible in case the product has been tampered with or modified.
17. Use only the spare parts which are supplied by the manufacturer. The use of non-original spare parts can compromise the product safety.
18. Always check security of fit to adult chair before each use and any limitations of the product.

Dream On Me Inc.
1532 S Washington Ave
Piscataway TWP NJ 08854

Made In ShenZhen.China



1532, S. Washington Avenue
Piscataway, NJ 08854
E-mail: info@dreamonme.com

www.dreamonme.com

Follow us on



@dreamonmeinc



@dreamonmeinc

to get your nursery featured on our social media.

Enter our monthly giveaway!

Simply scan the QRcode to register.



Chat with us!

For any questions or concerns or feedback.



DOM
FAMILY

