

Dream On Me Inc.
1532 S Washington Ave
Piscataway Township
NJ 08854
Email: info@dreamonme.com
www.dreamonme.com



ASSEMBLY INSTRUCTIONS

STYLE NO: 597

Scan the QR code to register your product
<https://dreamonme.com/customercare/registration/>



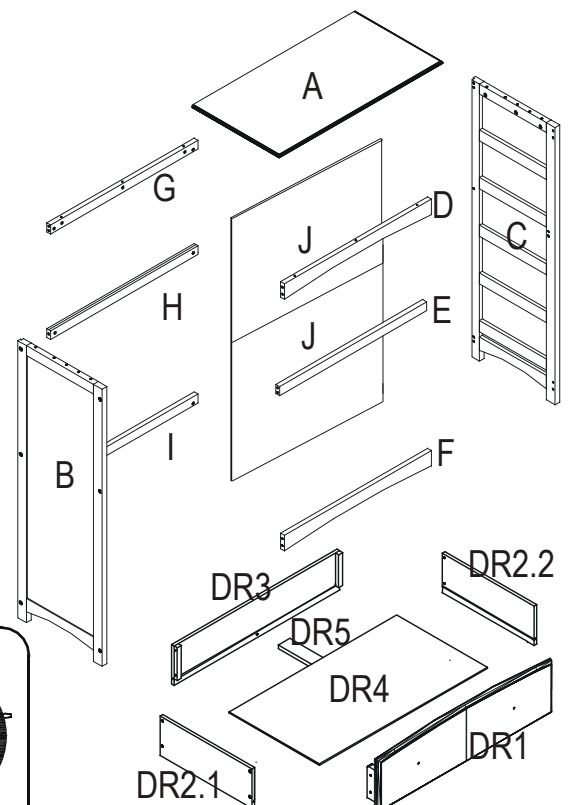
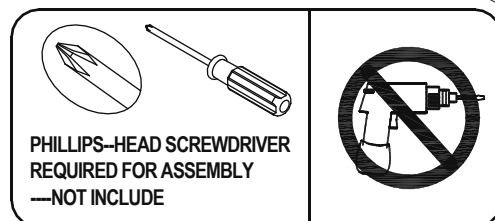
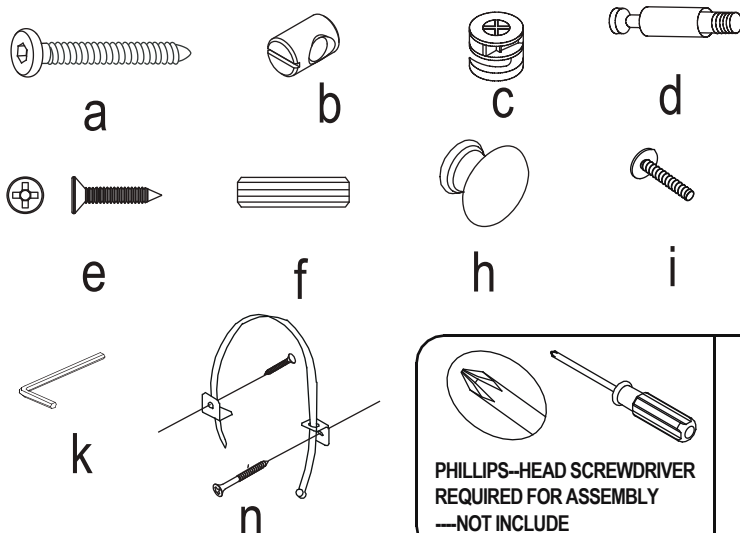
REF.	PART NAME	QUANTITY
A	Connection Panel	1
B	Left Panel	1
C	Right Panel	1
D	Front Top Rail	1
E	Front Middle Rail	1
F	Front Bottom Rail	1
G	Back Top Rail	1
H	Back Middle Rail	1
I	Back Bottom Rail	1
J	Back Panel	2
DR1	Drawer Front Panel (one is different from others)	5
DR2	Drawer Side Panel	10
DR3	Drawer Back Panel	5
DR4	Drawer Bottom Panel	5
DR5	Drawer Support Rail	5
a	2-1/8" bolt	12
b	barrel nut	12
c	cams	15
d	cam bolts	15
e	1" screw	45
f	1-3/5" wood dowel	10
h	knob	10
i	1-1/8" screw	10
k	allen wrench	1
n	tip over restraint	2

WARNING

Read all instructions before assembling. Save instructions for future use. Carefully remove and lay out all parts. Familiarize yourself with all diagrams to facilitate the assembly of your product. Check parts and the enclosed hardware bag with the hardware parts list to be sure all are included and quantities are correct. Destroy cardboard and plastic bags immediately.

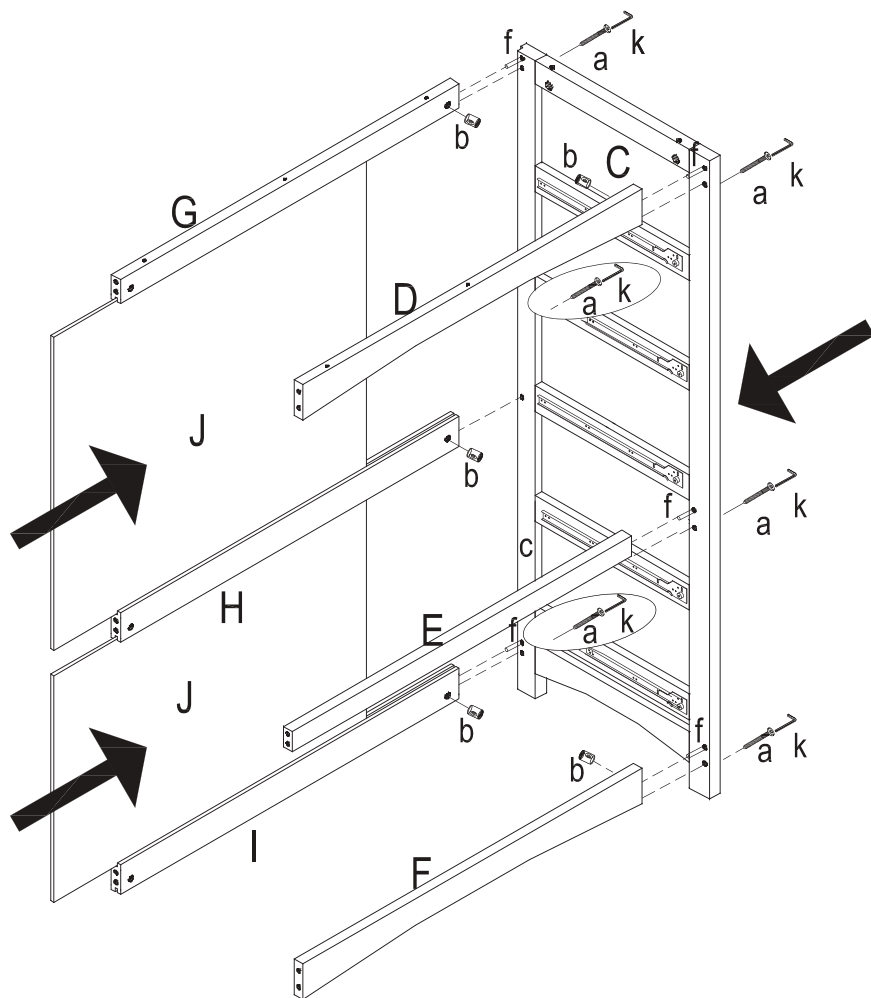
Attention: In order to properly assemble the chest, follow the assembly instructions carefully. Failure to assemble in the manner recommended could make the chest hazardous.

Warning: Never use this product if there are any loose or missing fasteners, loose joints, broken parts, or torn mesh/fabric. Check before assembly and periodically during use. Contact Dream On Me for replacement parts and instructional literature if needed.

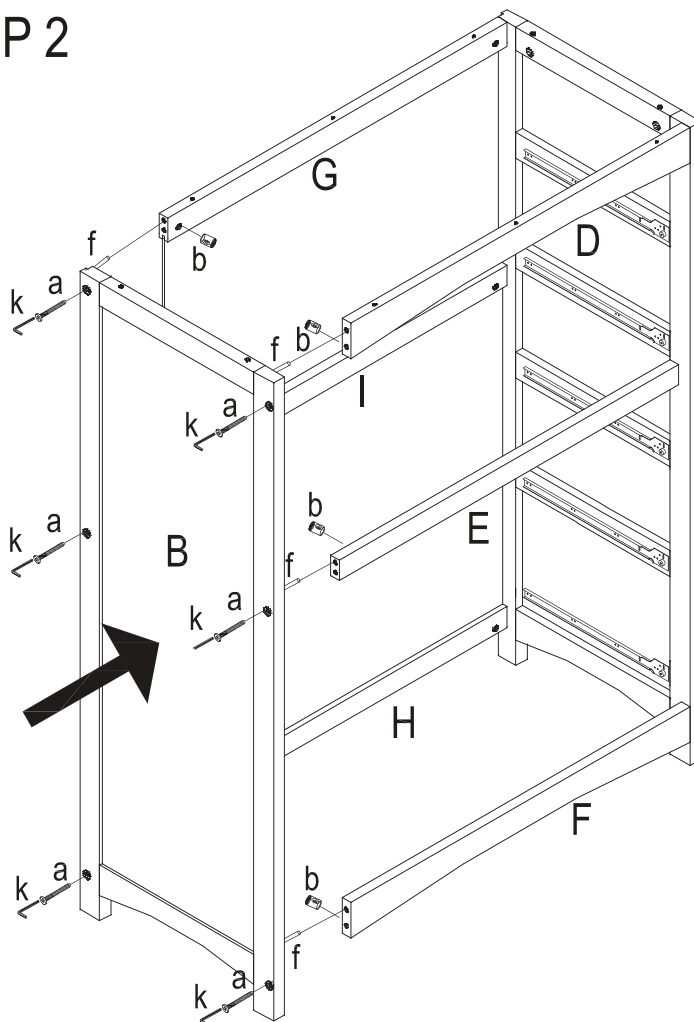


STEP 1

Use allen wrench (k) to connect bolts. Connect front top rail (D), front middle rail (E), front bottom rail (F), back top rail (G), back bottom rail (I) to right panel (C) by using 1-3/5" wood doewl (f), barrel nut (b) and 2-1/8" bolt (a). Connect back middle rail (H) to right panel (C) by using 2-1/8" bolt (a) and barrel nut (b). Then insert the back panel (J) into the grooves of part (G),(H),(I).



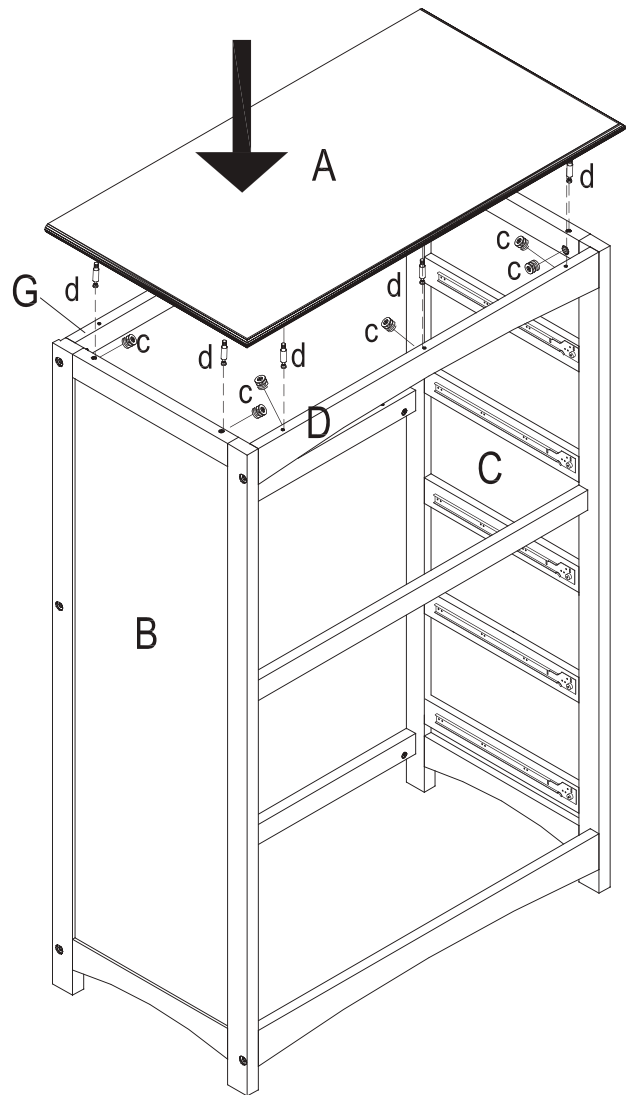
STEP 2



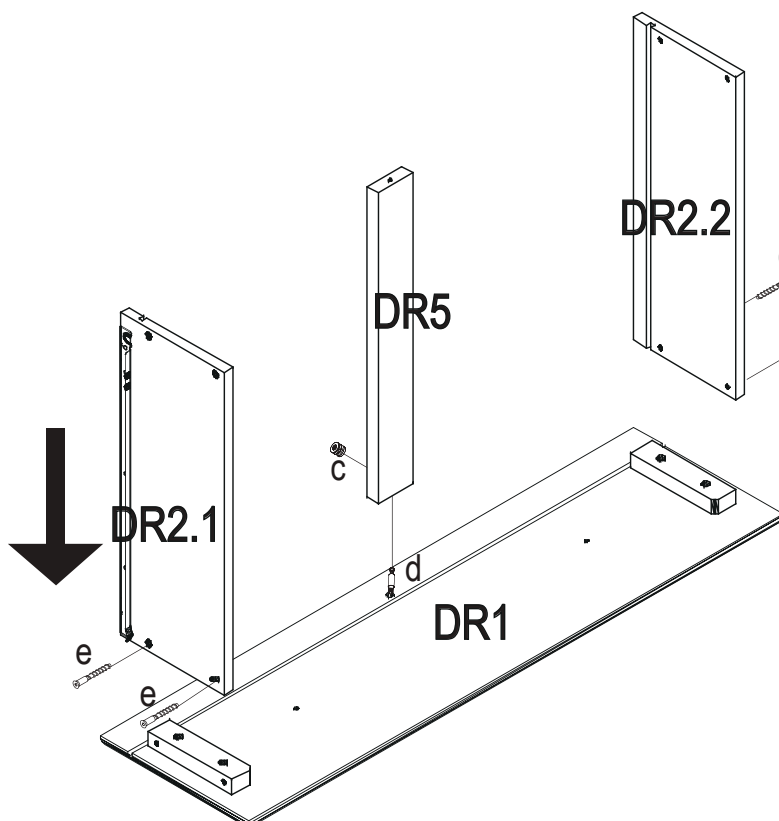
Assemble left panel (B) to the assembled parts use the same way as shown in STEP 1.

STEP 3

Connect connection panel (A) to left & right panel (B&C) and front & back top rail (D&G) by using cams (c) and cam bolts (d).
Tighten all by phillips-head screwdriver.



STEP 4



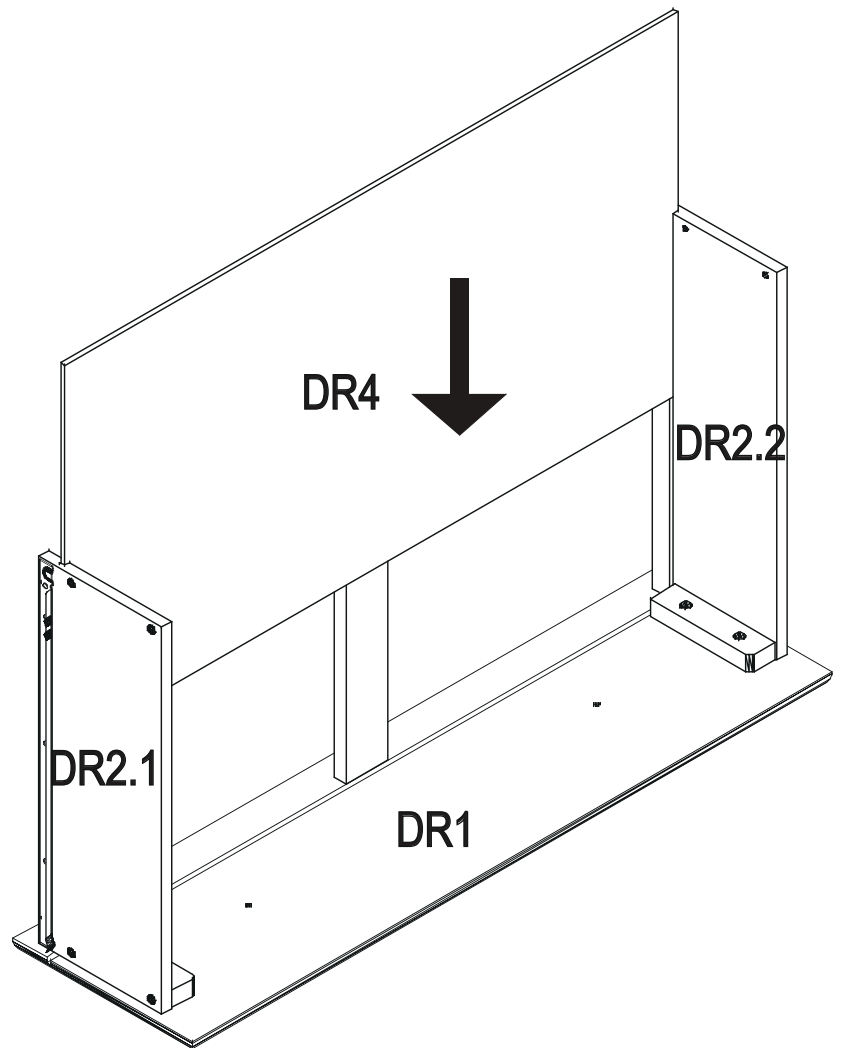
Connect drawer side panel (DR2) to front panel (DR1) by using 1" screw (e).
Connect drawer support rail (DR5) to drawer front panel (DR1) by using cams (c) and cam bolts (d).

MAKE SURE the grooves line up and face inside.

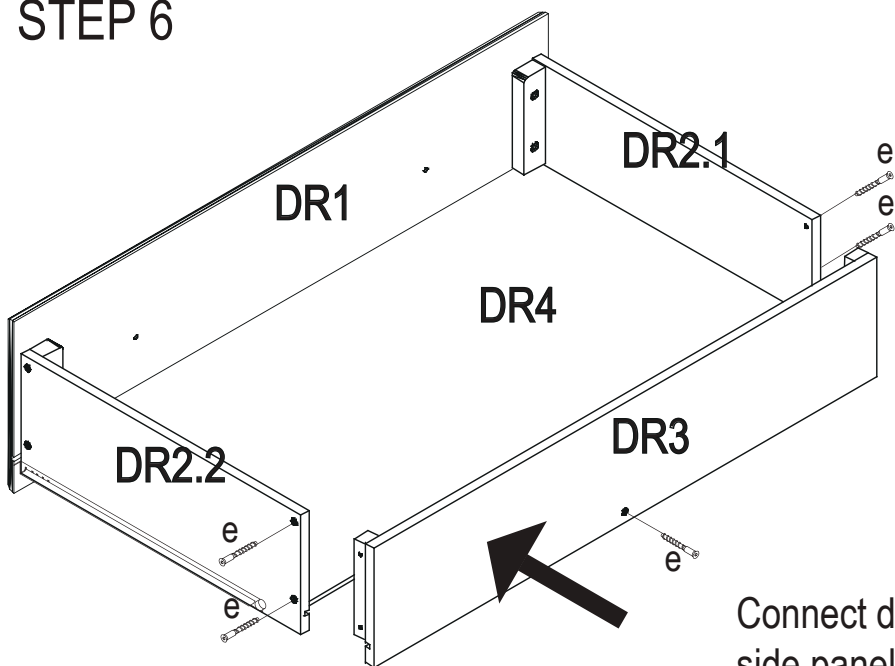
LOCK cams (c) into drawer support rail (DR5) by turning them.

STEP 5

Slide drawer bottom panel (DR4) into grooves of drawer front panel (DR1) and side panel (DR2).



STEP 6

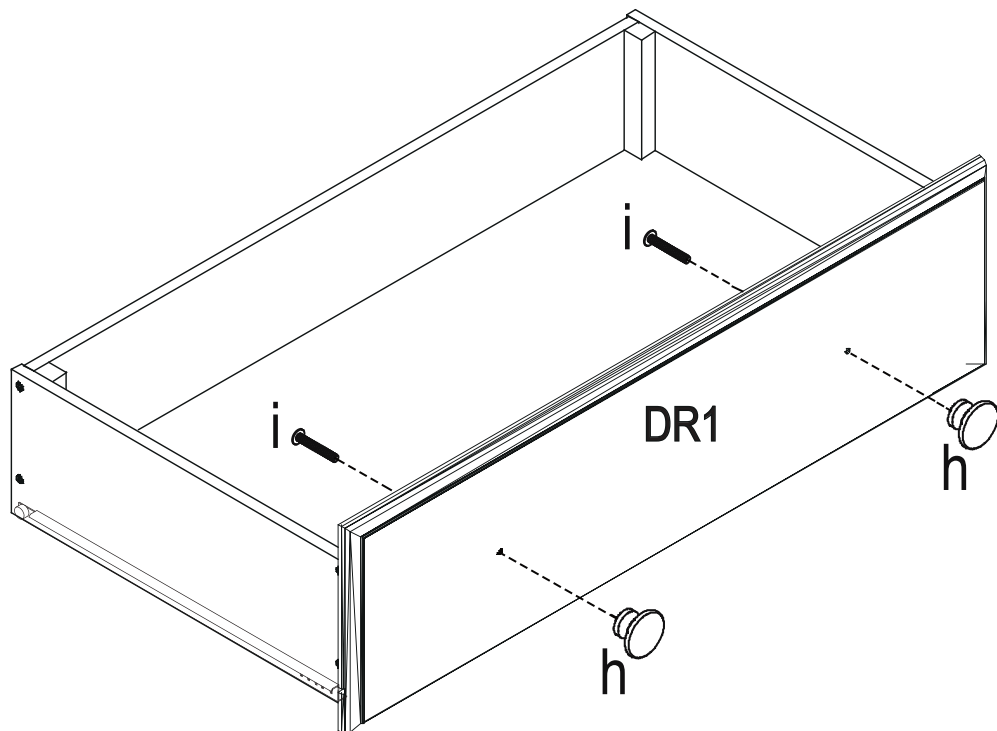


Connect drawer back panel (DR3) to drawer side panel (DR2) and drawer support rail (DR5) by using 1" screw (e).

ASSEMBLE the rest of drawers by repeating STEP 6,7,8.

STEP 7

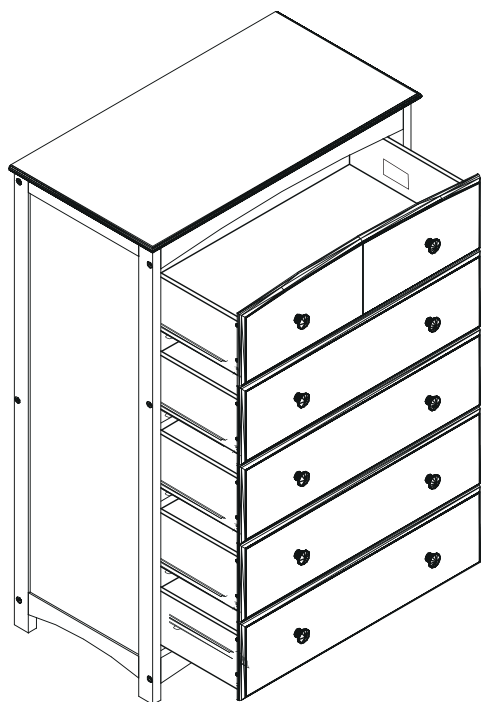
Connect the knob (h) to front panel (DR1) by using 1-1/8" screw (i).



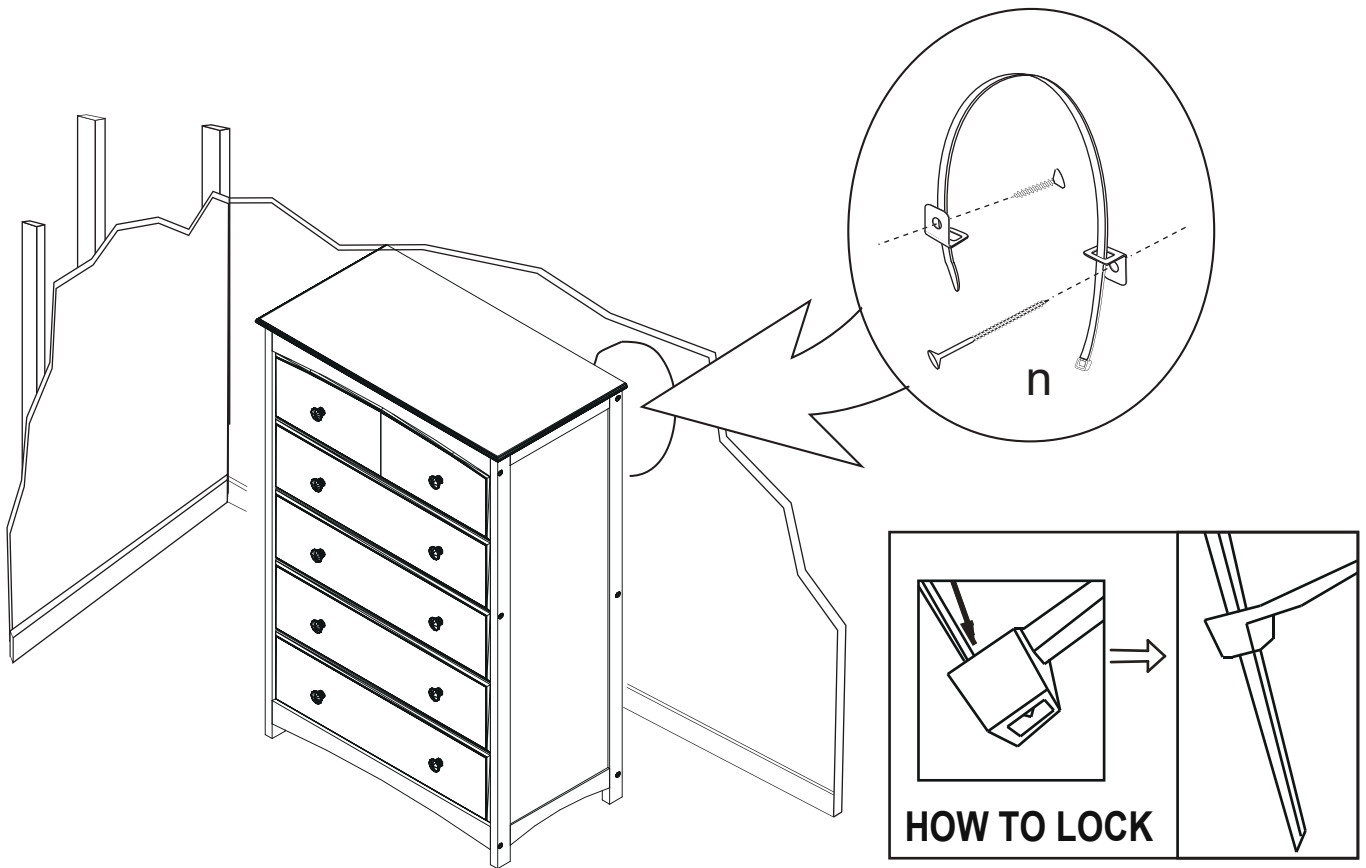
STEP 8

Slide the drawers into rails on left&right panel (B&C).

NOTE: PLEASE PUT THE DRAWER WITH CLEAN STICKER AS THE TOP ONE.



FURNITURE TIPPING DETERRENT HARDWARE



Tipping furniture may injure young children. Use of this tipping restraint hardware is highly recommended.

When properly instated this hardware could provide protection against the unexpected tipping of furniture due to improper use.

WARNING

This hardware is only a deterrent. Adult supervision is the only proper deterrent to prevent improper use of any potentially hazardous product.

1. Attach one of the mounting brackets securely to the back top edge of the furniture using the short screw.
2. Find the stud in the wall and mark the location on the wall for mounting the second bracket using a 2" wood screw approximately 2" below the bracket mounted to the edge of the furniture.
3. If a stud cannot be found, purchase a "Hollow-Wall Anchor Bolt" and attach the second bracket to the wall using that bolt. Make sure to follow all instructions by the manufacturer.
4. Place the furniture so the bracket on the back edge is in line with the bracket on the wall.
5. Lace an end of the nylon restraint strap down through each bracket. Bring both ends together and slide the beaded end of the strap through the key hole shaped slot in the other end tightly. Pull down on the beaded end until it snaps locks into the keyhole.
6. Check to make sure the strap is securely laced and locked to the brackets.



1532, S. Washington Avenue
Piscataway, NJ 08854
E-mail: info@dreamonme.com

www.dreamonme.com

Follow us on



@dreamonmeinc



@dreamonmeinc

to get your nursery featured on our social media.

Enter our monthly giveaway!

Simply scan the QRcode to register.



Chat with us!

For any questions or concerns or feedback.



DOM
FAMILY

