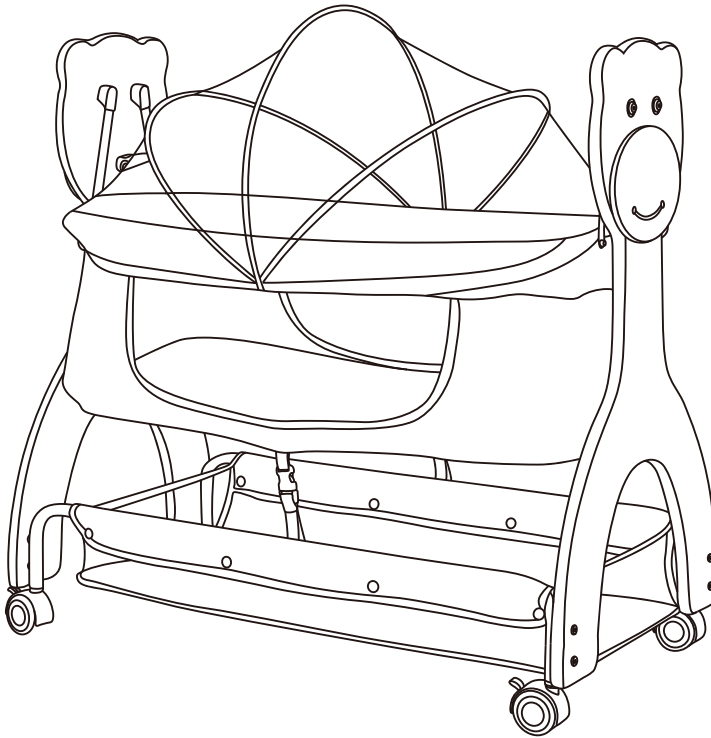




3-in-1 Portable Cub Bassinet



Scan the QR code to register your product
<https://dreamonme.com/customercare/registration/>



ITEM NO.: #392

Thank you for choosing Dream On Me and congratulations on joining The DOM Family, a family that has been transforming lives for 30 years! We appreciate your feedback and wish you the very best in the coming years with your new addition. If you have any questions or concerns please don't hesitate to reach out and a trusted DOM representative will assist you. Thank you again for entrusting us to supply you with the safest, functional and affordable baby products and accessories. Feel free to follow us on Facebook and Instagram for further opportunities and offers.

Parts List

Please check to make sure that all of the following parts listed are included in the box when opened. If there are any missing parts, please contact Dream On Me before using the product.



Headboard x2



Bassinet frame and cover



Basket frame with cover



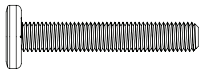
Canopy



Pad



Wheels x4



Screw (M6*35):12PCS



Allen key M5



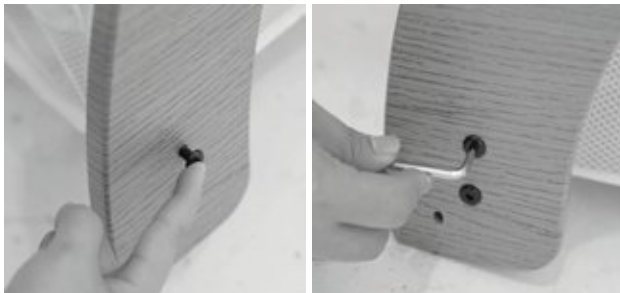
Washer: x4

Assembly

Step 1

Using the Allen key, connect the basket to each of the headboards using 8 of the provided screws.

Notice: There are 2 screws for each. Please secure all of screws tightly before use.



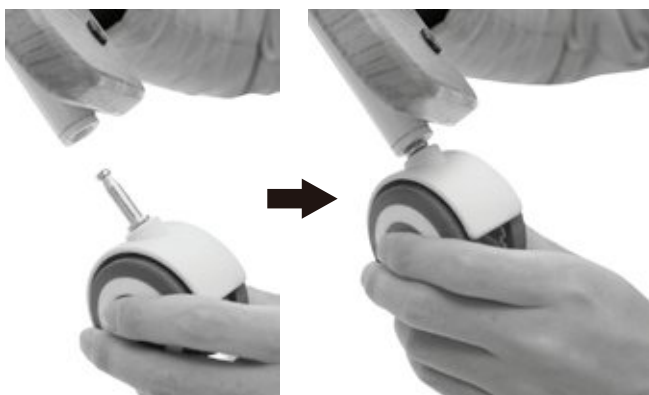
Step 2

1. Take the bassinet frame and cover and bring it between the 2 headboards. Align the arms above the bassinet frame with the holes as shown and screw them into place using the Allen key.



Step 3

Insert the wheel into the tube.



Step 4

Put the mattress pad into the bassinet.

Please make sure that the side with velcro is facing down.



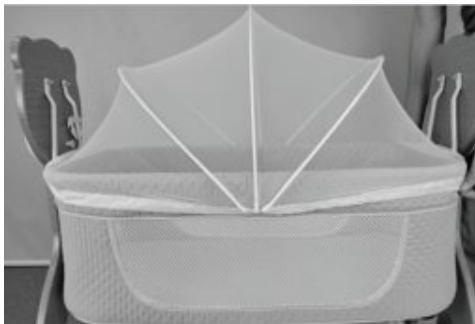
Step 5

Fasten the buckle before use.



Step 6

Attach the mosquito net using the snaps.



Step 7

When the canopy is not in use, use the straps to keep the canopy from drooping into the bassinet.

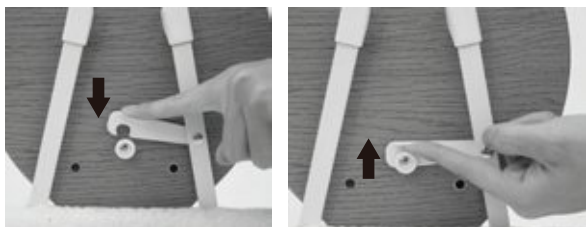
WARNING: ignoring this step could lead to possible entanglement or entrapment.



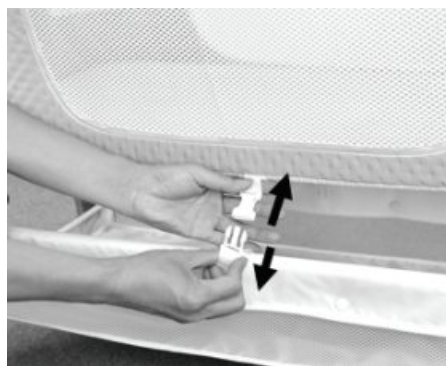
Functions

Switching to cradle

1. Unhook the hook that's keeping the cradle in a fixed position to allow the cradle to move freely.



2. Fasten the buckles at both sides while using in cradle mode.

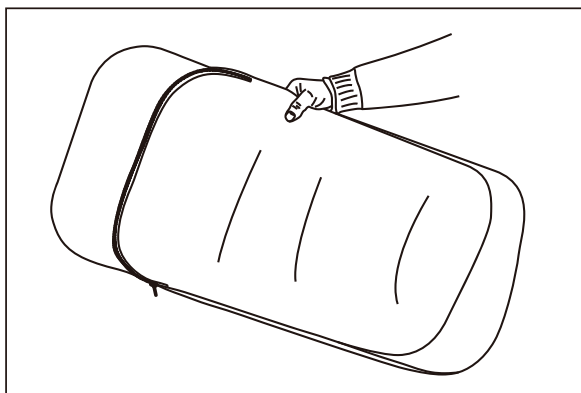


WARNING!

Always use the buckles fastened in cradle mode! Failure to comply may result in injury.

Washing the pad cover

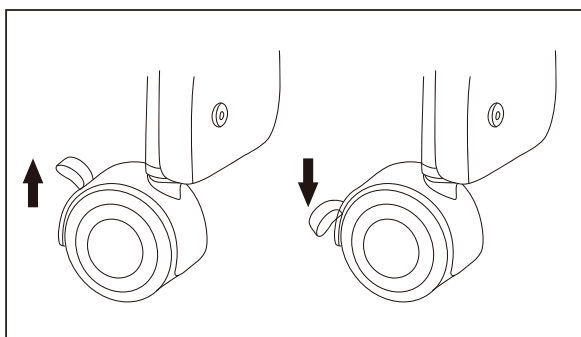
Unzip the back of the pad and remove the foam to wash the cover.



Locking and unlocking the wheels

Raise the brake button to unlock the wheels.

Push down the brake button to lock the wheels.



Notice:

Follow all of the instructions carefully. Incorrect use may cause damage to the bassinet.

Overloading, incorrect folding, or incorrect use of the accessories may cause damage to the bassinet.

Your child should never be left unattended.

WARNING:

Failure to follow these warnings and the instructions could result in serious injury or death.

FALL HAZARD - To help prevent falls, do not use this product when your baby begins to push up on hands and knees or has reached 25lbs weight or up to 3 months, whichever comes first.

WARNING:

SUFFOCATION HAZARD!

Infants have suffocated:

- In gaps between an extra padding and side of the bassinet / cradle, and
- On soft bedding.

Use **ONLY** the mattress pad provided by Dream On Me.

NEVER add a pillow, comforter, or another mattress for padding.

To reduce the risk of SIDS, pediatricians recommend healthy infants be placed on their backs to sleep, unless otherwise advised by your physician.

If a sheet is used with the pad, use only the one provided by Dream On Me to fit the dimension of the bassinet mattress.

Maintenance & cleaning:

- Please make a routine check to make sure that bassinet is secure.
- Please use the soft and dry cloth or sponge to clean the bassinet. Do not use alkaline or acidic water to wash the bassinet to avoid the water corrode the iron pipes or hardware.
- Do not use or keep the bassinet in a wet, cold or high temperature environment for extended periods of time. Please use a brush or other clean tools to clean any splotches on the fabric.



1532, S. Washington Avenue
Piscataway, NJ 08854
E-mail: info@dreamonme.com

www.dreamonme.com

Follow us on



@dreamonmeinc



@dreamonmeinc

to get your nursery featured on our social media.

Enter our monthly giveaway!

Simply scan the QRcode to register.



Chat with us!

For any questions or concerns or feedback.



DOM
— FAMILY —



slumber baby


sweetpea baby

évolur
evolving with your baby