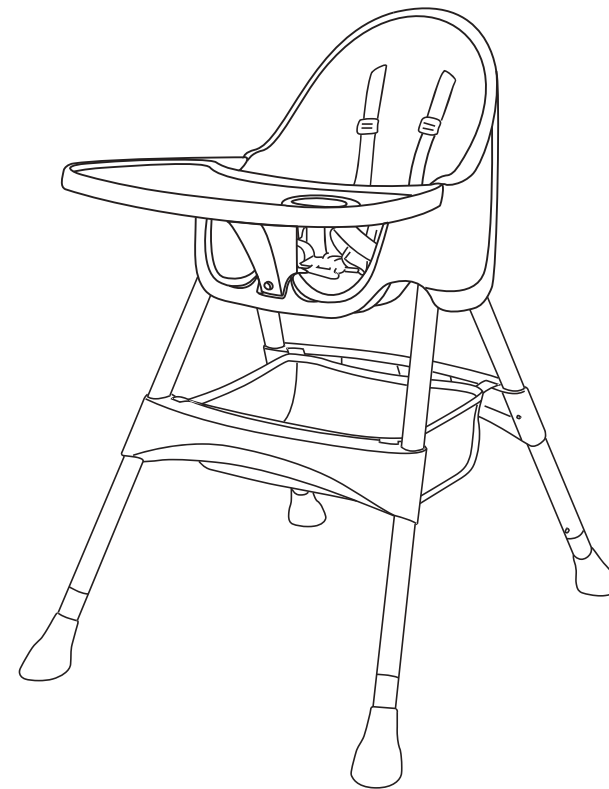


User Guide

These instructions are important! Please read carefully and retain for future use.

NOTE:

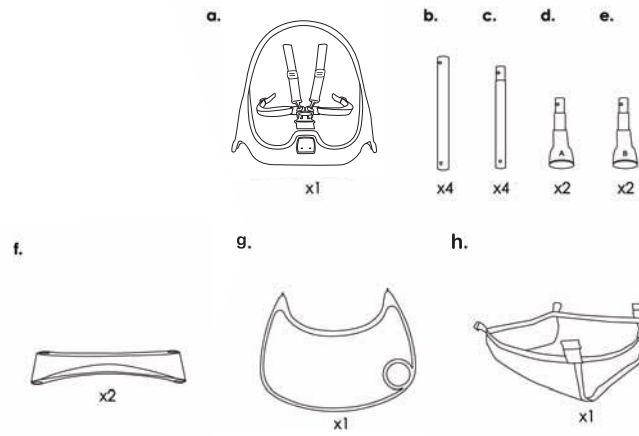
Drawings in this manual are for illustration purposes only.
The actual product may vary.
Manufacturer reserves the right to change any specifications or features without prior notice.



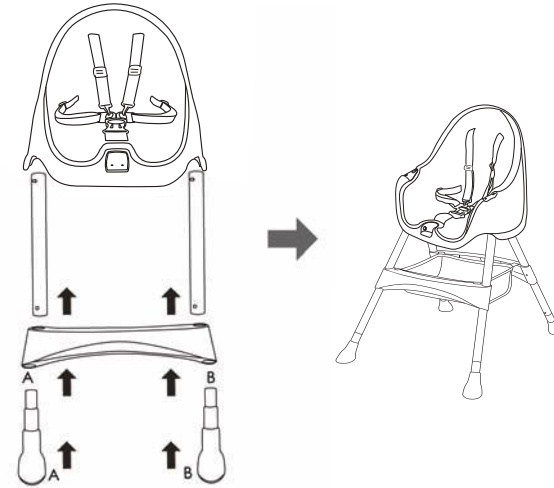
High Chair

Item: #259

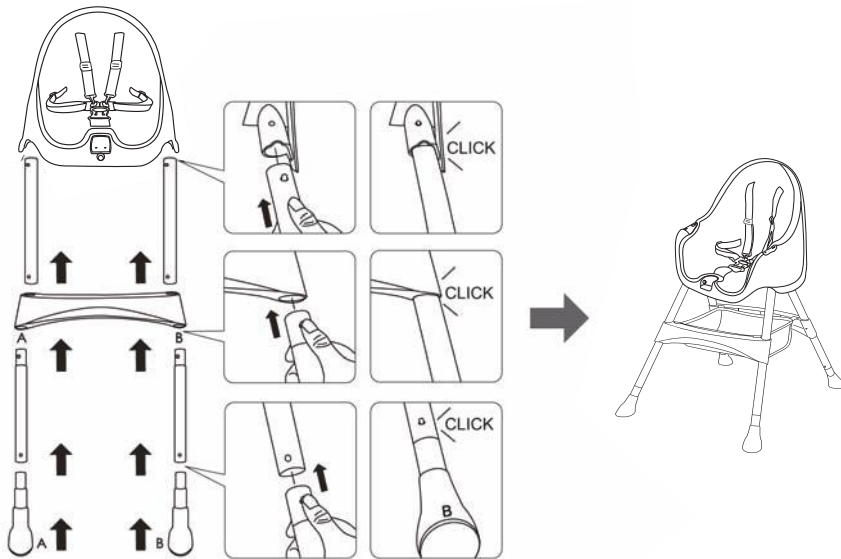
High Chair Components



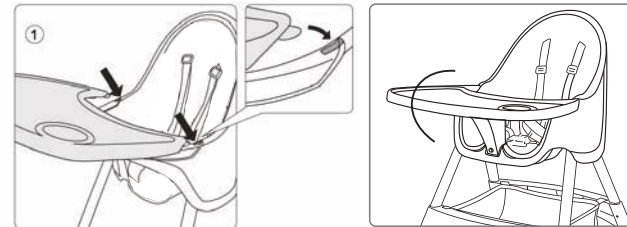
Adjusting the Height



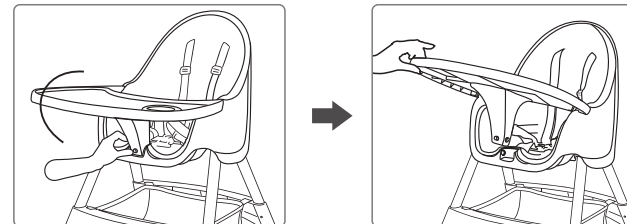
High Chair Assembly



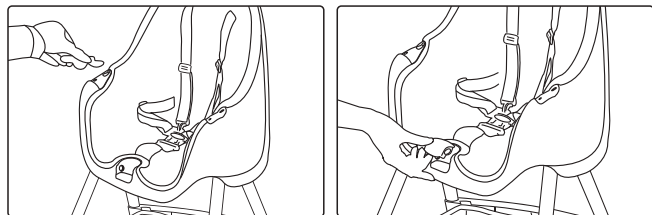
Front Tray Assembly



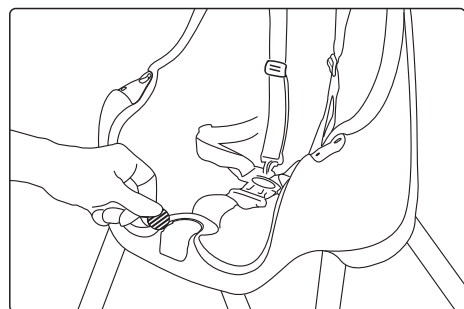
Front Tray Removal



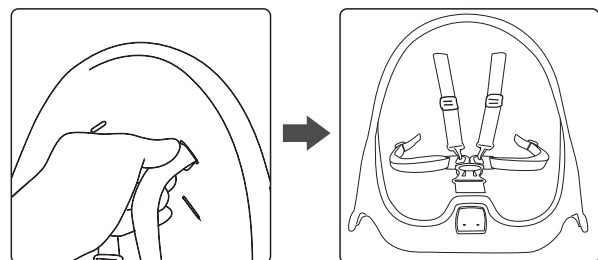
Protective Cap Assembly



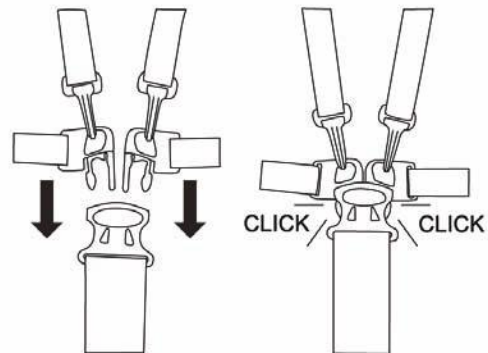
Protective Cap Removal



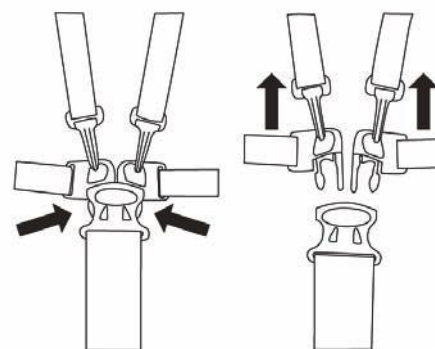
Safety Harness Assembly



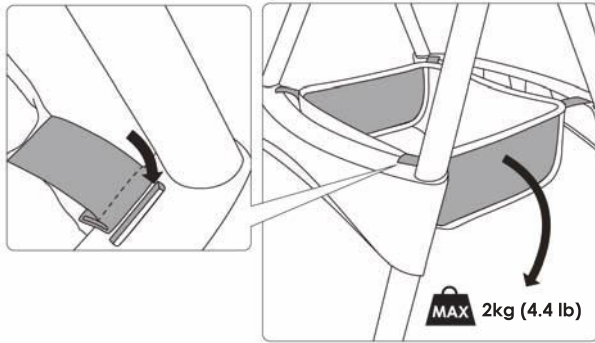
Fastening the Safety Harness



Releasing the Safety Harness



Storage Basket Assembly



Maintenance

For cleaning the fabric, seat belt, and tray, hand wash using a brush. Wipe out any excess water with a dry cloth and leave to dry in a shaded area. Ensure that all detergents are wiped out. To remove stubborn dirt, dilute a mild detergent, then apply directly to the dirty area. Thereafter, wipe off the detergent.

Ensure that any traces of moisture are wiped off with a dry cloth.

To prevent colour fading, do not leave to soak for a long period of time.

Constantly check that all parts of the high chair are fastened correctly.

Excessive exposure to sunlight could cause the colour of the high chair fabric and plastic to fade.

Failure to follow these warnings and the assembly instructions could result in serious injury or death.

▲ WARNING: Prevent serious injury or death from falls or sliding out, ensure

the harness is correctly fitted and that the child is secure in the restraint.

High chair is suitable for children 6 months to 36 months. High chair is not suitable for children under 6 months.

Do not use if any part is broken, torn or missing.

Do not use the high chair until the child can sit up unaided.

Do not use the high chair unless all components are correctly fitted and adjusted.

Never leave your child unattended, even for the shortest time.

Avoid placing the chair near naked heat sources such as electric bar fires, gas fires, etc. Or where a child could gain access to any other kind of hazard.

Ensure all users are familiar with the products operation. It should always assemble and operate easy. If it does not, do not force the mechanism-stop and read the instructions.

Only use on a flat stable surface.

Ensure your high chair is fully erected before placing your child inside.

Do not move the high chair with your child inside.

Do not allow your child to climb unassisted into, play with or hang onto your high chair.

This is not a toy.

All additional hazards such as electrical flex should be kept out of reach of the child in the high chair.

Assemble the chair once only, it is not intended to be taken apart and reassembled.

Ensure that the harness is fixed correctly before use.

Always secure child in the restraint.

The child should be secured in the high chair at all times by the restraining system,

The tray is not designed to hold the child in the chair. It is recommended that the high chair be used in the upright position only by children capable of sitting

upright unassisted.

DREAM ON ME INC.

1532 S WASHINGTON AVE PISCATAWAY

TWP NJ 08854

TEL: 732-752-7220

FAX: 732-752-7221

www.dreamonme.com

MADE IN CIXI, ZHEJIANG, CHINA